



LIFE360 PLUGIN FOR HOMESEER HS4

VERSION 4.1.2

RELEASE DATE: 8/21/2023

CONTENTS

Terms & Conditions	2
Overview.....	3
Installation.....	3
System Requirements.....	3
Configuration.....	5
Circle Members.....	8
Support.....	9
Appendix 1: Files.....	10

TERMS & CONDITIONS

Life360 has not provided an official API for developers; this plugin relies on unofficial documentation and is in control of what capabilities are provided. This means that if Life360 changes their API, work will have to be done on this plugin to make it compatible, and the scope and timing of those fixes is outside of this author's control. Your purchase and use of this plugin is as-is and at your own risk.

Excessive activity on your account may result in your account being suspended. While this plugin has been designed to minimize the chances of this occurring by implementing preventative measures such as timers and minimum update and polling frequencies, these values can be changed by the user. Regardless of the values entered (be they the default, smaller or larger), by activating this plugin in your Homeseer software, you acknowledge this risk and agree to indemnify and hold harmless the developer of this plugin, Homeseer Technologies, and any other third party plugin developers from any damages (including but not limited to financial, time spent, opportunity cost, and loss of account privileges).

LIFE360 is a trademark of Life360, Inc.

OVERVIEW

The skWare Life360 Plugin for Homeseer provides you with a way to incorporate your Life360 Members within Homeseer.

Life360 Family			
<input type="checkbox"/>	Steve Hill		
<input type="checkbox"/>	Status	Success	Today 7:27:56 AM UPDATE FORCE UPDATE
<input type="checkbox"/>	Location	Home	Today 7:27:40 AM
<input type="checkbox"/>	Short Address	██████████	Today 7:27:56 AM
<input type="checkbox"/>	Accuracy	50m	Today 7:27:56 AM
<input type="checkbox"/>	Battery Level	98%	Today 7:27:56 AM
<input type="checkbox"/>	Charging Status	Not Charging	Today 7:27:56 AM
<input type="checkbox"/>	WiFi Status	Enabled	Today 7:27:56 AM
<input type="checkbox"/>	Speed	0 mph	Today 7:27:56 AM
<input type="checkbox"/>	Driving	No	Today 7:27:56 AM
<input type="checkbox"/>	Address 1	██████████	Today 7:27:56 AM
<input type="checkbox"/>	Address 2	██████████	Today 7:27:56 AM
<input type="checkbox"/>	Map Link	Google Maps	Today 7:27:56 AM
<input type="checkbox"/>	Lattitude	██████████	Today 7:27:56 AM
<input type="checkbox"/>	Longitude	██████████	Today 7:27:56 AM
<input type="checkbox"/>	In Transit	No	Today 7:27:56 AM

SYSTEM REQUIREMENTS

The skWare Life360 Plugin for Homeseer runs on both Windows and Linux installations of HS4 and has been tested with version 4.2.19+.

On Linux, this plugin requires Mono 4.8.1 or higher. For Windows servers, it must be Vista or newer.

You must also have a functioning Life360 account.

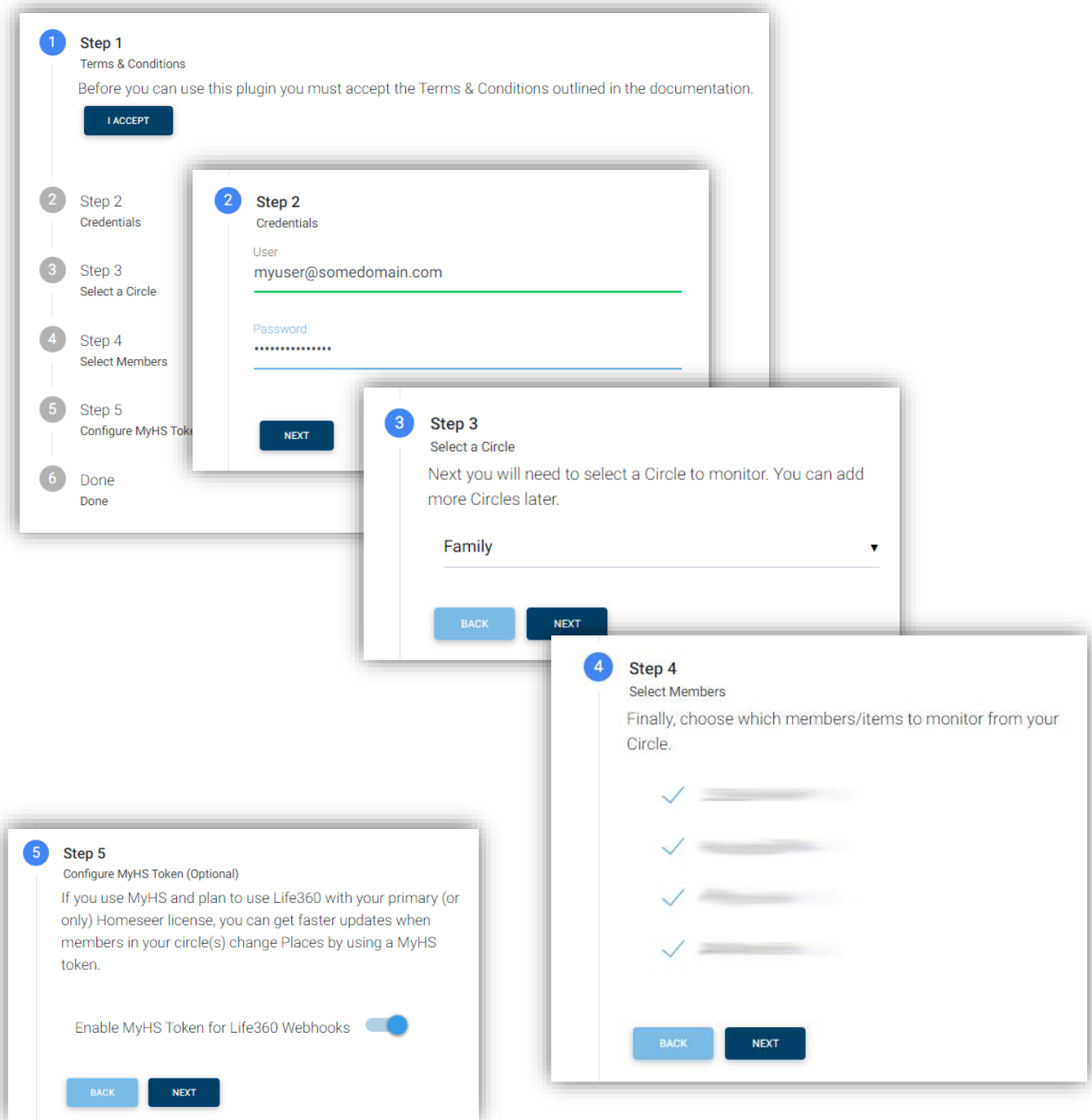
CONTROLS

The Status device allows you to request an Update from the Life360 servers (the same way the regular polling update does) or to “Force Update”, which is equivalent to clicking the refresh icon on a particular member inside the Life360 app. This asynchronous operation requests the device to send a new update to the server, then updates the plugin with the results. This may result in increased battery usage on the device.

INSTALLATION

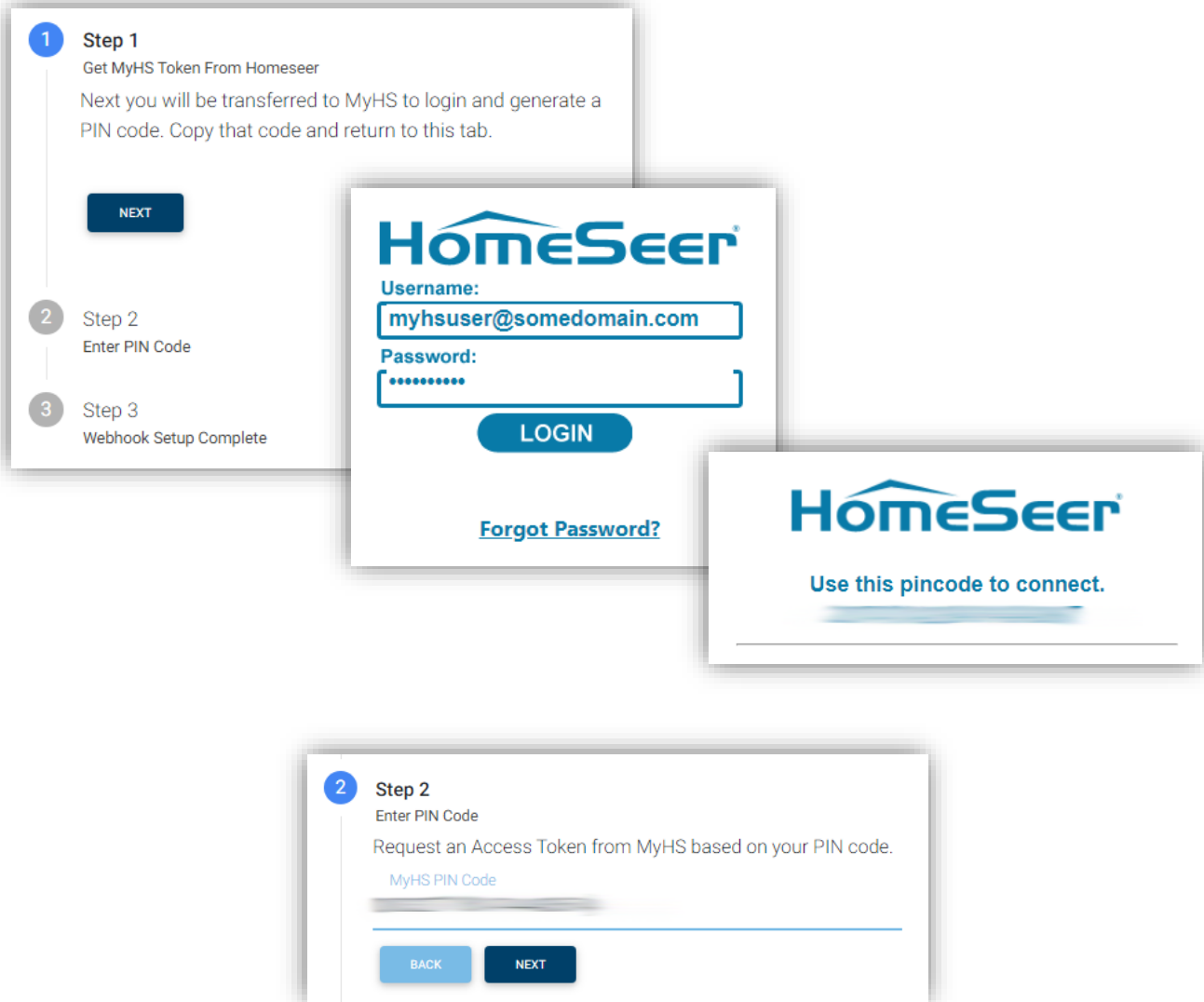
This Plugin is installed using the built-in updater capability of Homeseer. New installations include the binaries and supporting files needed to run the Plugin, and updates will replace any of those items that have changed.

The “Initial Setup” page is the first available menu item once the plugin is enabled. This page walks you through the process of accepting the Terms & Conditions, providing your Life360 credentials, selecting your initial circle and members to monitor, and optionally configuring a webhook via MyHS.



The webhook is a capability provided by Life360 to send out a proactive notice to a registered web URL when someone in the circle enters or leaves a defined Place. This provides much more immediate feedback than the default process of polling the servers every X seconds or minutes for an update.

This requires providing an address that is available via the internet, which Homeseer provides via the MyHS service. In order to authorize external connections to your system via this connection, MyHS has a process that allows you to obtain an access token which can be used in external requests. This plugin allows you to elect to use this service to receive these webhook calls and walks you through the process of obtaining a token.



Note: Only 1 webhook connection is allowed per circle, so if you have multiple Homeseer systems, only one can receive the webhook notification. Any others will have to continue to rely on the default recurring polling approach.

CONFIGURATION

After installing the plugin, a new “Life360” menu item can be found under “Plugins” menu in the Homeseer browser interface.

The “Initial Setup” page will walk you through the steps to accept the plugin Terms & Conditions (see above) and connect to your account. You can then enter your Life360 credentials and select an initial circle and members to be included in Homeseer.

After completing the initial setup, you can configure the plugin via the “Settings” page.

The screenshot shows the configuration interface for the Life360 plugin. It is divided into two main sections: 'Credentials' and 'Connection Options'.

Credentials Section:

- User Name:** myuser@somedomain.com
- Password:** masked with dots
- Authorization Status:** Indicated by a green checkmark. A purple button labeled 'RESET MY CONNECTION' is visible.
- Use MyHS Webhooks:** A toggle switch is currently turned on (blue).
- MyHS Token Status:** Indicated by a green checkmark. A purple button labeled 'RECONNECT WEBHOOK' is visible.

Connection Options Section:

- Poll Interval:** 300 seconds (min: 30)
- Update Frequency:** 15 seconds (min: 15)

Update your credentials here if your username or password changes. You can toggle use of the webhook and reconnect it here by generating a new MyHS token if needed.

The polling interval (in seconds) specifies how often HS should login to the website and check the current status of all members. A value of 30 seconds or higher is required.

The “Update Frequency” controls how much time must pass between update requests. These are specific requests outside of the polling window requested manually (via the “Update” button or script commands). A value of 15 seconds or higher is required. Requests made within less time than this will result in a “Waiting for update...” status temporarily, until the 15 seconds have passed.

From this page you can also choose which devices you would like the plugin to create and maintain.

The screenshot shows a configuration window with two main sections: "Device Options" and "Logging Options".

Device Options: This section contains a list of data points to be tracked, each with a checked checkbox. The items are arranged in three columns:

- Short Address
- Address 1
- Address 2
- Map Link
- Lattitude
- Longitude
- Accuracy
- Battery Level
- Is Charging
- Wifi Status
- In Transit
- Speed

Below the "Speed" option, there is a label "Units" with a text input field containing "mph".

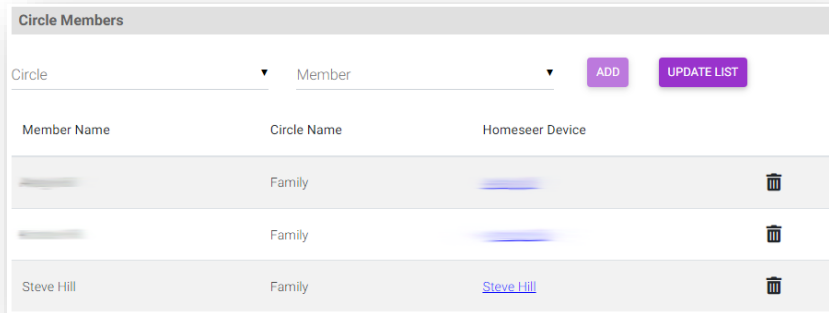
Logging Options: This section features a toggle switch for "Debug Logging (not for prolonged use)", which is currently turned on. To the right of the toggle are two purple buttons: "DOWNLOAD LOG FILE" and "CLEAR LOG FILE". At the bottom right of the window are two blue buttons: "CANCEL" and "SAVE".

Optional log data can be recorded in a stand-alone Plugin log (which can be found in the “Logs” directory of your Homeseer installation). Please note that this logging level should only be used when troubleshooting or sending in for support as it can have a significant impact on performance. This option also enables a special “Debug” menu item that may be helpful in diagnosing issues.

The “Download Log File” and “Clear Log File” buttons on this page make it easier to manage the plugin log files on your server, as you are no longer required to access the file system to get them when requested for support.

CIRCLE MEMBERS

Once your account is connected, the “Circle Members” Page will be added to the plugin menu, where you can add one or more members to be connected to Homeseer by selecting the circle and member you wish to add.



When you’ve added your device to the list, the initial parent device will be created. After the first polling of the status occurs, a series of child devices will be created based on your configuration settings, which by default include:

- Root Device
- Status
- Location
- Short Address
- Map Link
- Battery Level
- Is Charging
- Wifi Status

You can also highlight a member in the list and click “Remove”, which will delete the associated devices.

SUPPORT

Support for the skWare Life360 Plugin for Homeseer is provided through the standard Homeseer channels. The primary mechanism is via the [Life360 Plugin forum](#) on the Homeseer website. The author can be contacted directly at steve@skware.net.

KNOWN ISSUES & LIMITATIONS

- The “In Transit” field appears to never be set by the Life 360 Servers. A future update to this plugin may add virtual logic to set “In Transit” based on speed.
- Only one webhook can be configured per Circle, so only configure this on a single Homeseer environment. If you have multiple installations, other Homeseer instances will have to rely on the polling updates instead.
- Webhook notifications are only delivered by Life360 servers for places with notifications turned on for the account that is used to connect the plugin.
- The number of places and place notifications is determined by the level of subscription you have for Life360 on the account that is used to connect the plugin.

APPENDIX 1: FILES

The following files are used by the Plugin. Directories in bold are part of the standard Homeseer installation. Files marked with * are created by the software during usage; all other files are included in the installation.

```

<Homeseer Installation Directory>
HSPI_SKWARE_HW_LIFE360.exe
HSPI_SKWARE_HW_LIFE360.exe.config
\Bin
  \skWare
    \Life360
      log4net.dll
      Newtonsoft.Json.dll
      skWare.Common.dll
      skWare.Common.dll.config
      skWare.Common.HS4.dll
      skWare.Common.HS4.dll.config
      skWare.Homeseer.Life360.Core.dll
      skWare.Homeseer.Life360.Core.dll.config
\Config
  HSPI_SKWARE_HW_LIFE360.ini*
\html
  Authorize.html
  Debug.html
  debug_circles.html
  debug_members.html
  Help.html
  member_list.html
  Members.html
  Settings.html
  Setup.html
  skware_common.js
  webhook.html
\Life360
  skWare Life360 Plugin User Guide.pdf
  \images
    \places
      away.png
      gym.png
      home.png
      place.png
      school.png
      store.png
      work.png
    battery_0.png
    battery_1.png
    battery_2.png
    battery_3.png
    battery_4.png
    charging_no.png
    charging_yes.png
    driving_no.png
    driving_yes.png
    failed.png
    google_maps.png
    gps_high.png
    gps_med.png
    gps_low.png
    lattitude.png
    longitude.png
    schedule.png
    speed.png
    success.png
    transit_no.png
    transit_yes.png
    unknown.png
    waiting.png
    wifi_off.png
    wifi_on.png
\Logs
  HSPI_SKWARE_HW_LIFE360.log*

```